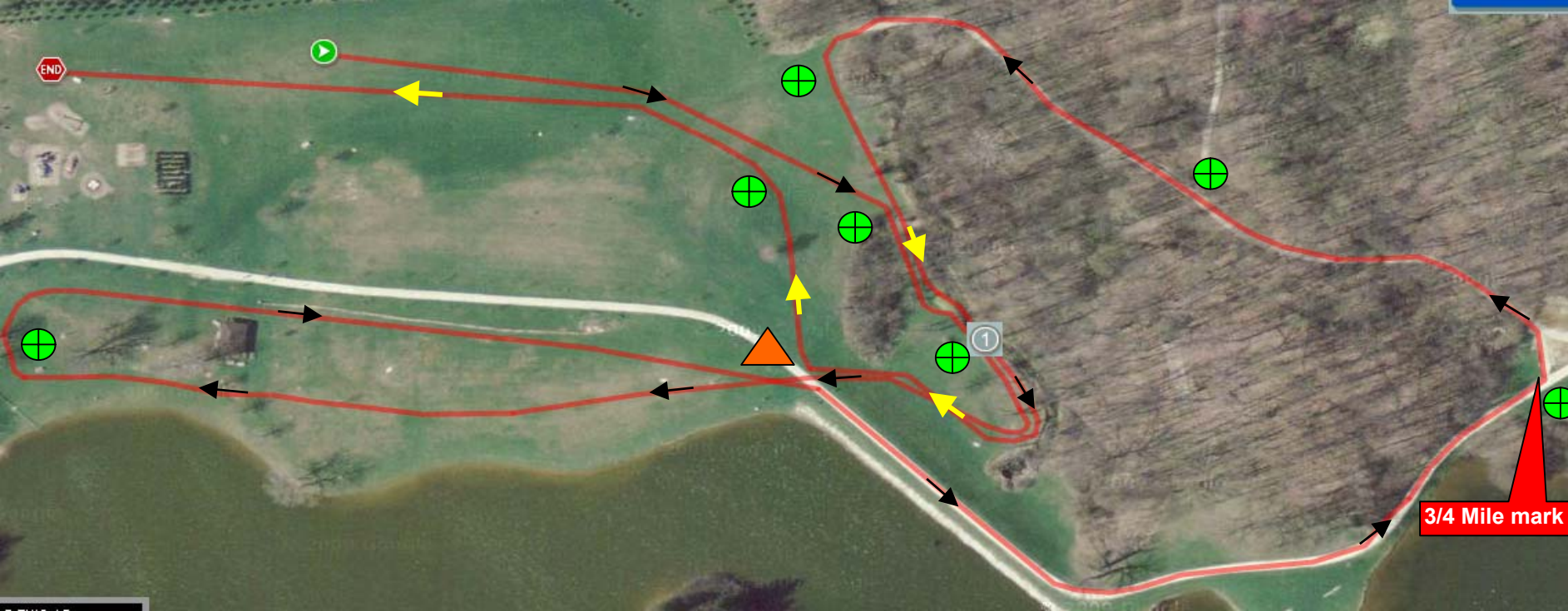


2000 Meter Course



⊕ Course Clerk

▲ Lead Course Clerk

*YELLOW (LIGHT) ARROWS INDICATE SECOND & POSSIBLE DUPLICATE PORTIONS OF COURSE

*NOTE - ALL RACES ARE THE SAME FOR THE FIRST 3/4 MILE

3000 Meter Course



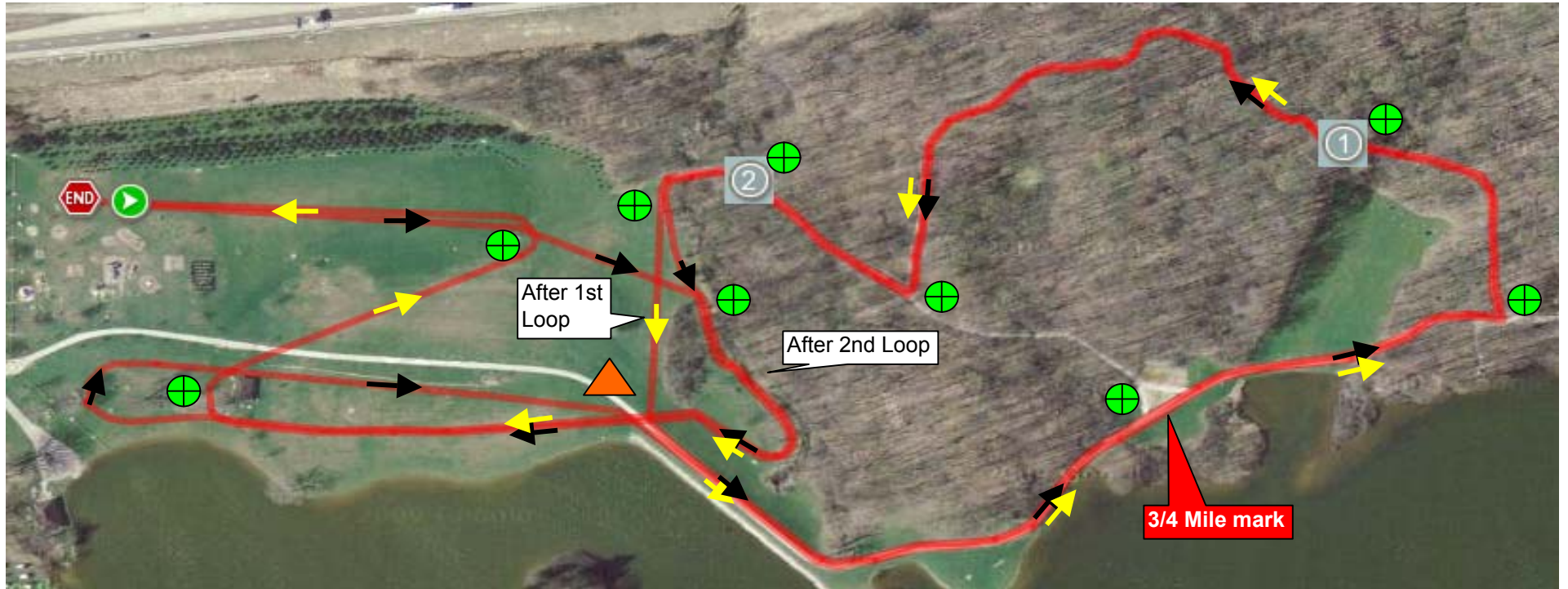
⊕ Course Clerk

▲ Lead Course Clerk

*YELLOW (LIGHT) ARROWS INDICATE SECOND PORTION OF COURSE

*NOTE - ALL RACES ARE THE SAME FOR THE FIRST 3/4 MILE

4000 Meter Course



 Course Clerk

 Lead Course Clerk

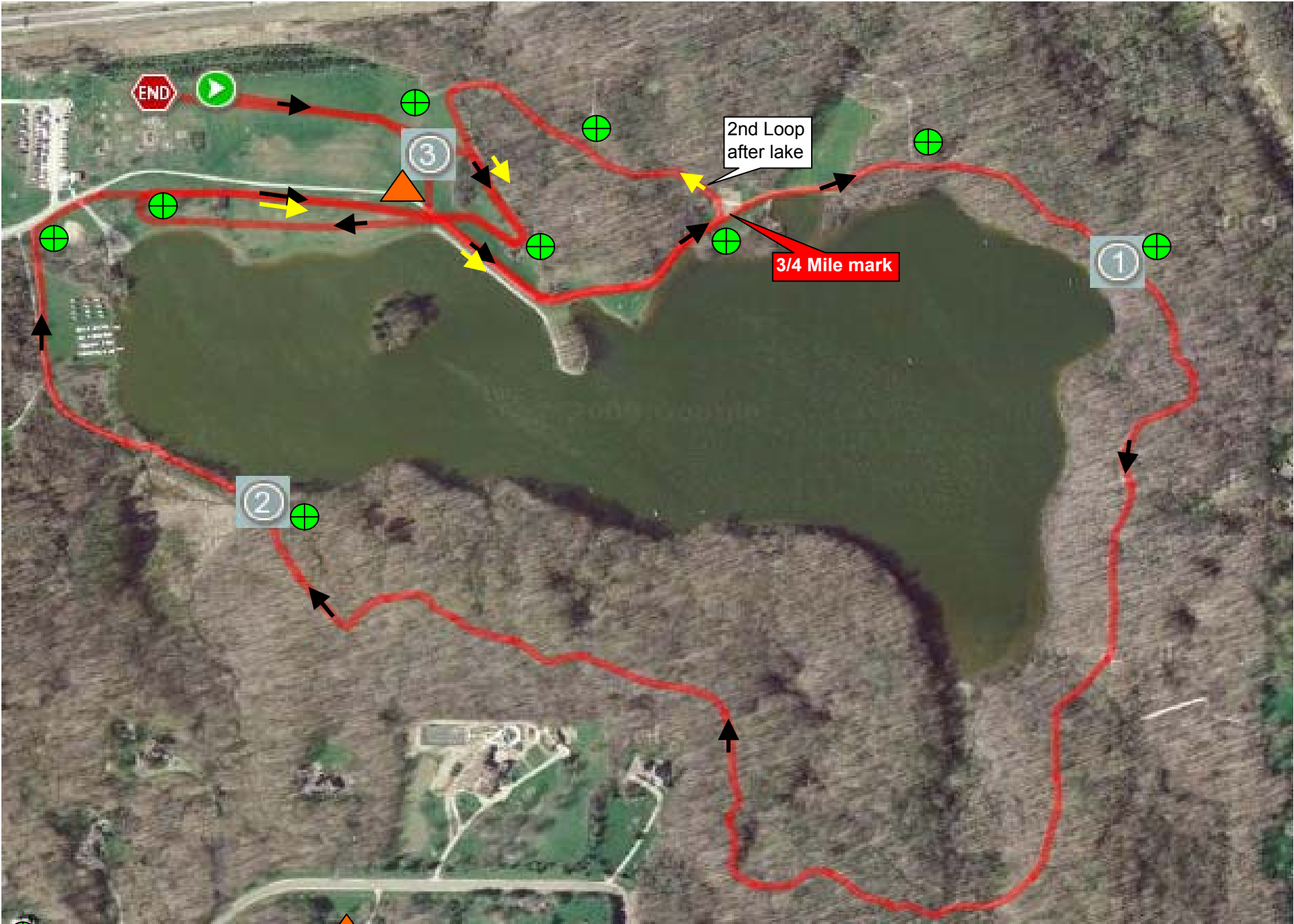
The first 3/4 of a mile on this course is the same as all other courses


Black arrows indicate first part of course

Yellow arrows indicate second portion of course

***NOTE - ALL RACES ARE THE SAME FOR THE FIRST 3/4 MILE**

5000 Meter Course



 Course Clerk

 Lead Course Clerk

***5000 METER COURSE IS DUPLICATE TO THE 2000 METER COURSE WITH A LARGE LOOP AROUND THE LAKE IN THE MIDDLE.**

***NOTE - ALL RACES ARE THE SAME FOR THE FIRST 3/4 MILE**